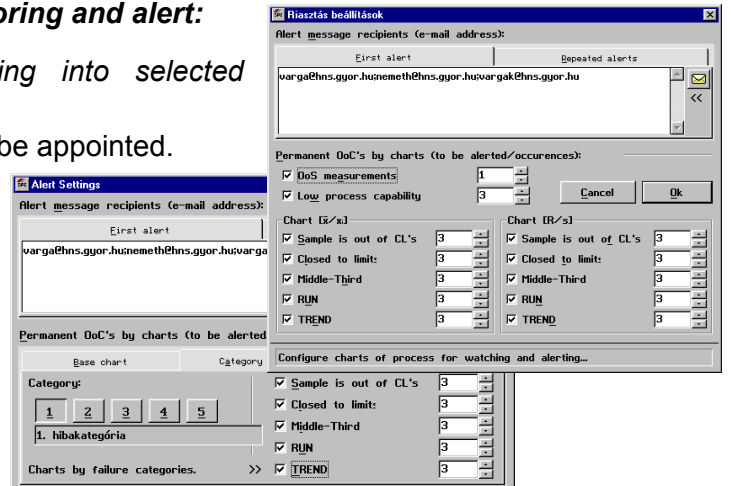


Automatic Out of Control Monitoring and Alert

Functions for automatic Out of Control monitoring and alert:

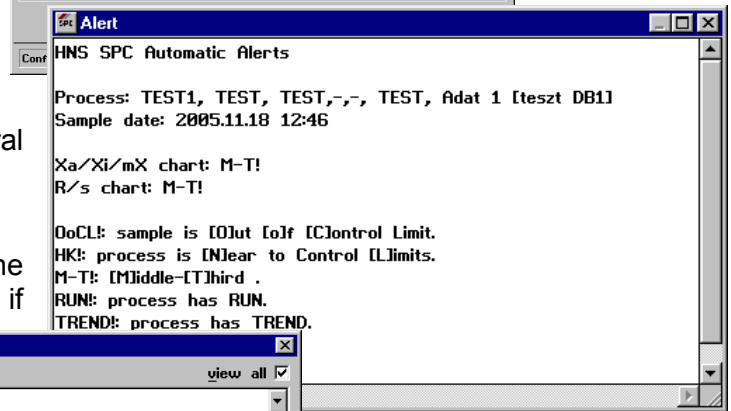
1. Setting the criteria of automatic monitoring into selected processes

- The processes required to monitor should be appointed.
- The lasting Out of Control criteria should be defined among process settings.
- Alarm criteria in reference to variables:
 - allowed number of parts in a subgroup out of tolerance limit,
 - capability index lasting under critical value,
 - lasting Out of Control state.
- Alarm criteria in reference to attributes:
 - lasting Out of Control state in relative to failure group, failure categories or failures,
 - special care can be set for several failures.



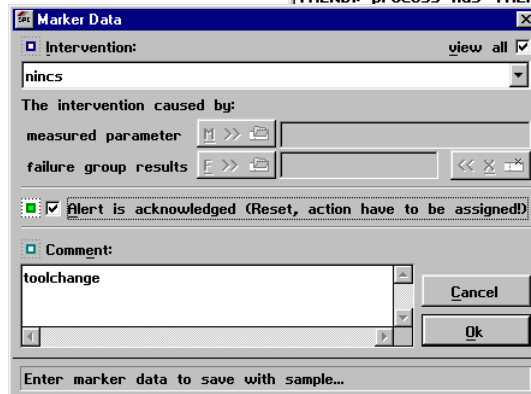
2. Automatic analysis for selected processes

- Analysis of selected process will be done according defined period from time to time if new data input has happened since last analysis.
- If a lasting Out of Control is detected, the subgroup after of which input occurs Out of Control will be marked automatically.



3. Sending automatic alert in case of lasting Out of Control

- Automatic alert (by e-mail) will be sent to defined address relative to Out of Control for selected process.
- Not acknowledged alerts are repeated to defined address according defined period from time to time.



4. Alerts are repeated until they are acknowledged or till limitation

- Automatic alert is sent again and again until required action is done, namely alert is acknowledged, or until defined number of repetitions run out.

5. Central monitoring

- Status matrix to review the selected processes respectively their Out of Control overview to assist to operational engineering intervention.

